

HHC Covering Letter: Group M – "Be Active!" Animatic.

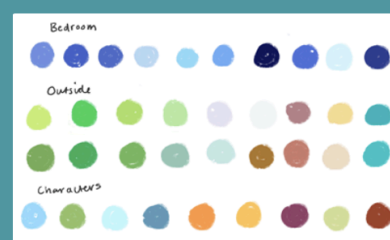
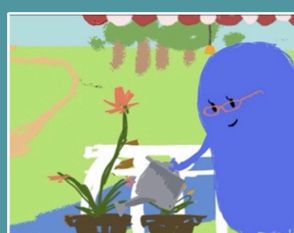
By Boyu, Maha & Tuesday

Regarding Previous Comments:

- We changed the colour of the mother from the similar colour of the son to a dark blue, we also added some red reading glasses for more differentiation as you may find parents reading often.
- We removed the cogs working in the brain, it was a nice idea to represent the inner workings of dopamine, but in execution it complicated the film.

Animatic Context:

- To make the title card clearer than the animatic, yet still incorporating in our animation, we decided to show the title card and pan down from the ceiling to the Blob's bedroom in the final film.
- Majority of the colour in the animatic is representative of what will be in the final film, there is one section in black and white (00:00:40:00) this is due to the level of detail in these short scenes, and we needed provide an idea of movement for the animatic. The colour palette for these scenes will be consistent to the others, see below.
- The animatic provides a sense of tone, pacing and movement for the film, so the characters may appear rough and as if they're on top of the environment rather than in. This will be developed in the final film after stages of clean-up. The mother in the first and last scene will be in the colours above.
- There are few sound effects and environmental background noise as well as a soundtrack, this is to ensure the script is paced well and gives a sense of world building. The final film will have a refined narration, soundtrack and sound effects.
- In the final film we will use a variety of characters from our inclusivity character design sheet, in the final scene all members of the community will be seen being active as the camera pans across.



With thanks from Boyu, Maha and Tuesday!